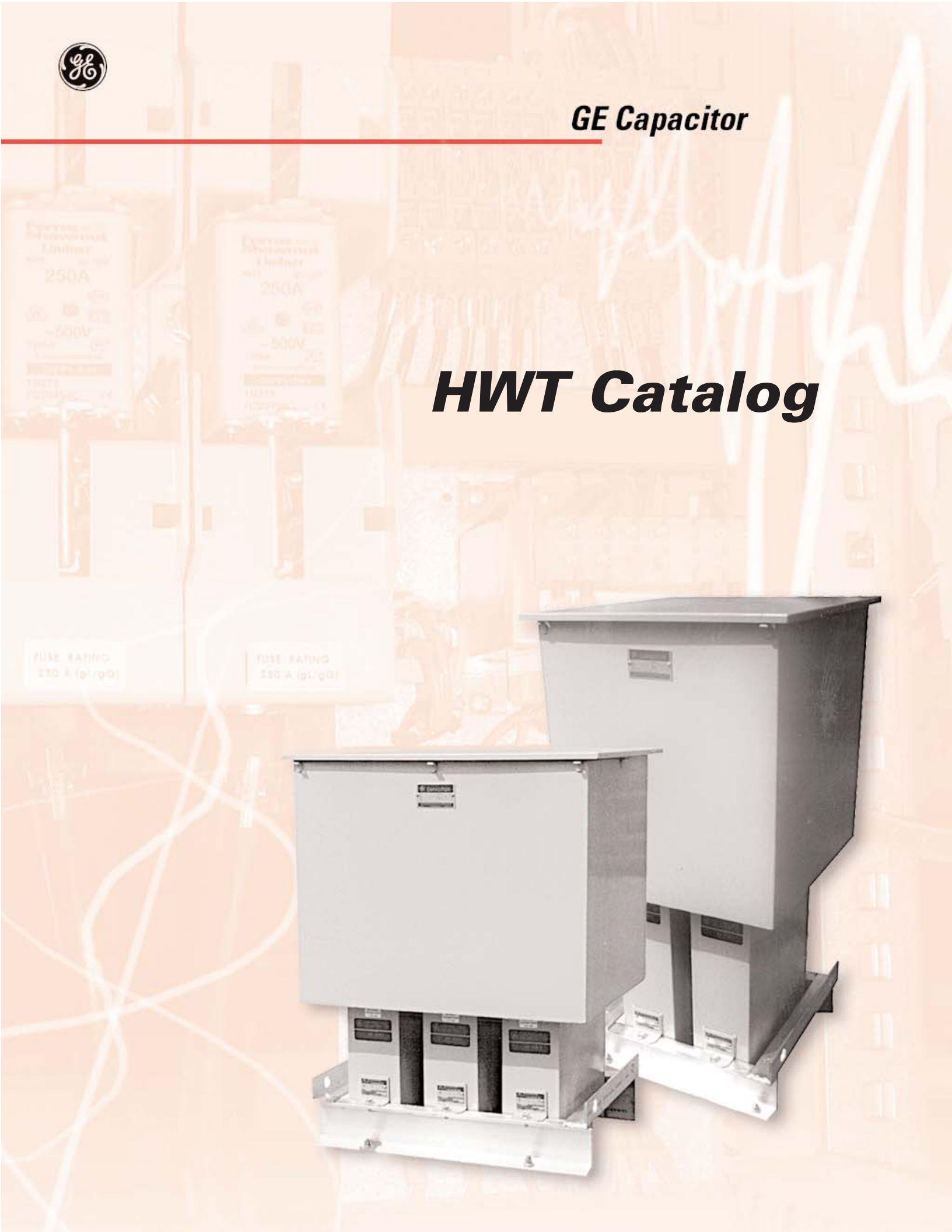




GE Capacitor

HWT Catalog



FUSE RATING
250 A (g) (gG)

FUSE RATING
250 A (g) (gG)





Type HWT Medium Voltage Power Factor Correction Capacitors HWT Indoor/Outdoor Equipments

These medium voltage capacitor equipments are suitable for use on primary circuits where small amounts of kVAR are required. They may be installed at various load centers or directly at the terminals of 2300 and 4000 volt motors.

Available Ratings: Not for harmonic applications

- 2400V, 25 - 825 kVAR, 3-phase, Delta, 60 Hz
 - 4160V, 25 - 900 kVAR, 3-phase, Delta, 60 Hz
 - 4800V, 25 - 900 kVAR, 3-phase, Delta, 60 Hz
 - NEMA three terminal compartment
 - Two of three phases are fused, optional third fuse available
 - 6600V, 50-400 KVAR, 3-Phase Delta, 50 or 60 Hz
 - 7200V, 50-400 KVAR, 3-Phase Delta, 50 or 60 Hz
 - 12,470V 50-600 KVAR, 3-Phase Delta, 60 Hz
 - 13,800V, 50-500 KVAR, 3-Phase Delta, 60 Hz
- All equipment above 4800V supplied with Three- (3) Phase fusing only.
 - Discharge resistors reduce residual voltage to 50 volts or less within 5 minutes of de-energization

HWT's Film/Foil capacitors offer an energy efficient polypropylene film dielectric. This heavy duty conventional film dielectric system is designed to handle unusual overvoltages and overcurrents without reducing capacitor life. The Film/Foil dielectric results in low watts per kVAR power consumption during capacitor operation. The less than 0.2 watts per kVAR losses and corresponding low internal heat generation mean low operating temperatures for the Film/Foil capacitor, a significant factor in extending capacitor life.

Film/Foil designs feature time-proven Dielektrol[®], a biodegradable NFPA Class IIIB dielectric fluid. This design offers high reliability and long life and is suitable for operation over a temperature range of -40°C to +46°C.

Line Fuses

GE provides 50,000 amp interrupting capacity current limiting fuses. A pop-up button gives visual indication of blown fuse.

Note: NEC Article 460-8B requires capacitors to have overcurrent protection in all ungrounded conductors (except if connected on the load side of a motor overload protective device). Three-phase capacitors fused only on two phases will not provide adequate protection if a line-to-ground faults should occur in the unfused phase.

Mounting

HWT equipments are designed to be mounted upright on any level surface.

Line Connection and Cable Entrance

Entrance may be made through either end panel of the terminal compartment (after first punching out the appropriate size hole).

Solderless connectors are provided on each phase.

Blown Fuse Lights

Blown fuse lights provide a positive external indication of an operated fuse. A glowing light makes inspection of capacitors easy, effective and safe. A 120 VAC source must be supplied externally by customer. When ordered with this option, the HWT assembly is supplied with one light per capacitor. (Available on 2400, 4160 and 4800V product only.)

Note: To order Blown Fuse Light option add "100" to the last 3 digits of the standard part number.
Ex: 37F0524436 becomes 37F0524536.

For CSA tested and labeled equipment and units add 037 suffix to catalog number.

Assembly	Connector Size
one unit	#10-#4
two unit	#14-1/0
three unit	#6 - 250 MCM



Complete Assemblies Including Terminal Box, Fuses and Mounting Frame

kVAR	2400-volt Assemblies Catalog Number	4160-volt Assemblies Catalog Number	4800-volt Assemblies Catalog Number	Fig. No.	Approx. Weight		Dimensions					
							C		E		F	
					Lb	Kg	Inch	mm	Inch	mm	Inch	mm

Individual Units - With Terminal Boxes and 2 Fuses per unit

25	37F0520411	37F0523411	37F0526411	1	54	25	24.44	621	3.71	94	--	--
50	37F0520412	37F0523412	37F0526412	1	59	27	26.06	662	5.34	136	--	--
75	37F0520413	37F0523413	37F0526413	1	64	29	27.68	703	6.96	177	--	--
100	37F0520414	37F0523414	37F0526414	1	69	31	29.44	748	8.71	221	0.75	19
125	37F0520415	37F0523415	37F0526415	1	76	35	30.18	767	9.46	240	0.50	13
150	37F0520416	37F0523416	37F0526423	1	81	37	32.68	830	11.96	304	0.17	4
175	37F0520418	37F0523418	37F0526425	1	86	39	33.35	847	12.63	321	0.17	4
200	37F0520417	37F0523417	37F0526424	1	92	42	33.35	847	12.63	321	0.88	22
225	37F0520419	37F0523419	37F0526426	1	103	47	36.06	916	18.33	466	0.88	22
250	37F0520420	37F0523420	37F0526427	1	103	47	36.06	916	18.33	466	--	--
275	37F0520421	37F0523421	37F0526428	1	114	52	39.06	992	18.33	466	--	--
300	37F0520421	37F0523422	37F0526429	1	114	52	39.06	992	18.33	466	--	--

Two Units Interconnected-With Terminal Box, 2 Fuses per unit and Mounting Frame

300	37F0521415			2	149	68	33.43	849	12.70	323	--	--
325	37F0521416	37F0524416	37F0527420	2	154	70	33.43	849	12.70	323	--	--
350	37F0521417	37F0524417	37F0527417	2	159	72	33.43	849	12.70	323	--	--
375	37F0521419	37F0524419	37F0527421	2	165	75	33.43	849	12.70	323	--	--
400	37F0521418	37F0524418	37F0527418	2	171	78	33.43	849	12.70	323	--	--
425	37F0521420	37F0524420	37F0527422	2	181	82	39.18	995	18.45	469	--	--
450	37F0521421	37F0524421	37F0527423	2	192	87	39.18	995	18.45	469	--	--
475	37F0521422	37F0524422	37F0527424	2	192	87	39.18	995	18.45	469	--	--
500	37F0521423	37F0524423	37F0527425	2	192	87	39.18	995	18.45	469	--	--
525	37F0521424	37F0524424	37F0527426	2	203	92	39.18	995	18.45	469	--	--
550	37F0521425	37F0524425	37F0527427	2	214	97	39.18	995	18.45	469	--	--
575		37F0524426	37F0527428	2	214	97	39.18	995	18.45	469	--	--
600		37F0524427	37F0527429	2	214	97	39.18	995	18.45	469	--	--

Three Units Interconnected-With Terminal Box, 2 Fuses per unit and Mounting Frame

575	37F0522422			3	248	113	33.43	849	12.70	323	--	--
600	37F0522421			3	254	115	33.43	849	12.70	323	--	--
625	37F0522423	37F0525423	37F0528422	3	265	120	39.18	995	18.45	469	--	--
650	37F0522424	37F0525424	37F0528423	3	276	125	39.18	995	18.45	469	--	--
675	37F0522425	37F0525425	37F0528424	3	287	130	39.18	995	18.45	469	--	--
700	37F0522426	37F0525426	37F0528425	3	298	130	39.18	995	18.45	469	--	--
725	37F0522427	37F0525427	37F0528426	3	298	130	39.18	995	18.45	469	--	--
750	37F0522428	37F0525428	37F0528427	3	298	130	39.18	995	18.45	469	--	--
775	37F0522429	37F0525429	37F0528428	3	309	135	39.18	995	18.45	469	--	--
800	37F0522430	37F0525430	37F0528429	3	320	140	39.18	995	18.45	469	--	--
825	37F0522430	37F0525431	37F0528430	3	331	145	39.18	995	18.45	469	--	--
850		37F0525432	37F0528431	3	331	145	39.18	995	18.45	469	--	--
875		37F0525433	37F0528432	3	331	145	39.18	995	18.45	469	--	--
900		37F0525434	37F0528433	3	331	145	39.18	995	18.45	469	--	--

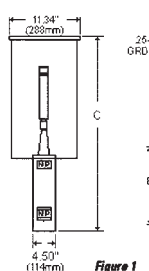


Figure 1

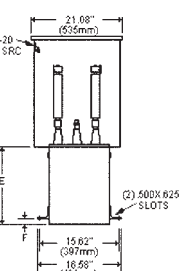


Figure 2

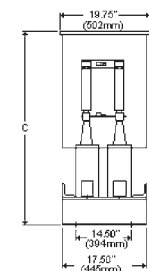


Figure 3

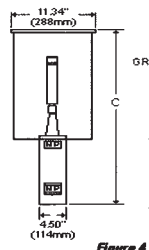


Figure 4

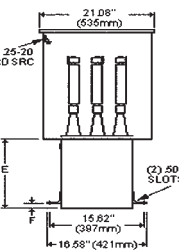


Figure 5

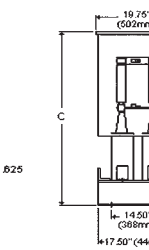


Figure 6



Individual Units -- With Terminal Box and 3 Fuses Per Unit							Dimensions					
kVAR	2400 Volt Assemblies	4160 Volt Assemblies	4800 Volt Assemblies	Fig	Approx. Weight		C		E		F	
	Catalog Number	Catalog Number	Catalog Number		No.	Lb.	Kg.	in.	mm.	in.	mm.	in.
25	37F0520431	37F0523431	37F0526431	4	64	29	27.68	703	6.96	177	---	---
50	37F0520432	37F0523432	37F0526432	4	64	29	27.68	703	6.96	177	---	---
75	37F0520433	37F0523433	37F0526433	4	64	29	27.68	703	6.96	177	---	---
100	37F0520434	37F0523434	37F0526434	4	69	31	29.44	748	8.71	221	---	---
125	37F0520435	37F0523435	37F0526435	4	76	35	30.18	767	9.46	240	0.75	19
150	37F0520436	37F0523436	37F0526443	4	81	37	32.68	830	11.96	304	0.5	13
175	37F0520438	37F0523438	37F0526445	4	86	39	33.35	847	12.63	321	0.17	4
200	37F0520437	37F0523437	37F0526444	4	92	42	33.35	847	12.63	321	0.17	4
225	37F0520439	37F0523439	37F0526446	4	103	47	36.06	916	18.33	466	0.88	22
250	37F0520440	37F0523440	37F0526447	4	103	47	36.06	916	18.33	466	0.88	22
275	37F0520441	37F0523441	37F0526448	4	114	52	39.06	992	18.33	466	---	---
300		37F0523442	37F0526449	4	114	52	39.06	992	18.33	466	---	---

Two Units Interconnected Frame - With Terminal Box, 3 Fuses Per Unit, and Mounting Frame							Dimensions					
kVAR	2400 Volt Assemblies	4160 Volt Assemblies	4800 Volt Assemblies	Fig	Approx. Weight		C		E		F	
	Catalog Number	Catalog Number	Catalog Number		No.	Lb.	Kg.	in.	mm.	in.	mm.	in.
300	37F0521435			5	149	68	33.43	849	12.70	323	---	---
325	37F0521436	37F0524436	37F0527440	5	154	70	33.43	849	12.70	323	---	---
350	37F0521437	37F0524437	37F0527437	5	159	72	33.43	849	12.70	323	---	---
375	37F0521439	37F0524439	37F0527441	5	165	75	33.43	849	12.70	323	---	---
400	37F0521438	37F0524438	37F0527438	5	171	75	33.43	849	12.70	323	---	---
425	37F0521440	37F0524440	37F0527442	5	181	82	39.18	995	18.45	469	---	---
450	37F0521441	37F0524441	37F0527443	5	192	87	39.18	995	18.45	469	---	---
475	37F0521442	37F0524442	37F0527444	5	192	87	39.18	995	18.45	469	---	---
500	37F0521443	37F0524443	37F0527445	5	192	87	39.18	995	18.45	469	---	---
525	37F0521444	37F0524444	37F0527446	5	203	92	39.18	995	18.45	469	---	---
550	37F0521445	37F0524445	37F0527447	5	214	97	39.18	995	18.45	469	---	---
575		37F0524446	37F0527448	5	214	97	39.18	995	18.45	469	---	---
600		37F0524447	37F0527449	5	214	97	39.18	995	18.45	469	---	---

Three Units Interconnected Frame - With Terminal Box, 3 Fuses Per Unit, and Mounting Frame							Dimensions					
kVAR	2400 Volt Assemblies	4160 Volt Assemblies	4800 Volt Assemblies	Fig	Approx. Weight		C		E		F	
	Catalog Number	Catalog Number	Catalog Number		No.	Lb.	Kg.	in.	mm.	in.	mm.	in.
575	37F0522442			6	248	113	33.43	849	12.70	323	---	---
600	37F0522441			6	254	115	33.43	849	12.70	323	---	---
625	37F0522443	37F0525443	37F0528442	6	265	120	39.18	995	18.45	469	---	---
650	37F0522444	37F0525444	37F0528443	6	276	125	39.18	995	18.45	469	---	---
675	37F0522445	37F0525445	37F0528444	6	287	130	39.18	995	18.45	469	---	---
700	37F0522446	37F0525446	37F0528445	6	298	130	39.18	995	18.45	469	---	---
725	37F0522447	37F0525447	37F0528446	6	298	130	39.18	995	18.45	469	---	---
750	37F0522448	37F0525448	37F0528447	6	298	130	39.18	995	18.45	469	---	---
775	37F0522449	37F0525449	37F0528448	6	309	135	39.18	995	18.45	469	---	---
800	37F0522450	37F0525450	37F0528449	6	320	140	39.18	995	18.45	469	---	---
825	37F0522451	37F0525451	37F0528450	6	331	145	39.18	995	18.45	469	---	---
850		37F0525452	37F0528451	6	331	145	39.18	995	18.45	469	---	---
875		37F0525453	37F0528452	6	331	145	39.18	995	18.45	469	---	---
900		37F0525454	37F0528453	6	331	145	39.18	995	18.45	469	---	---



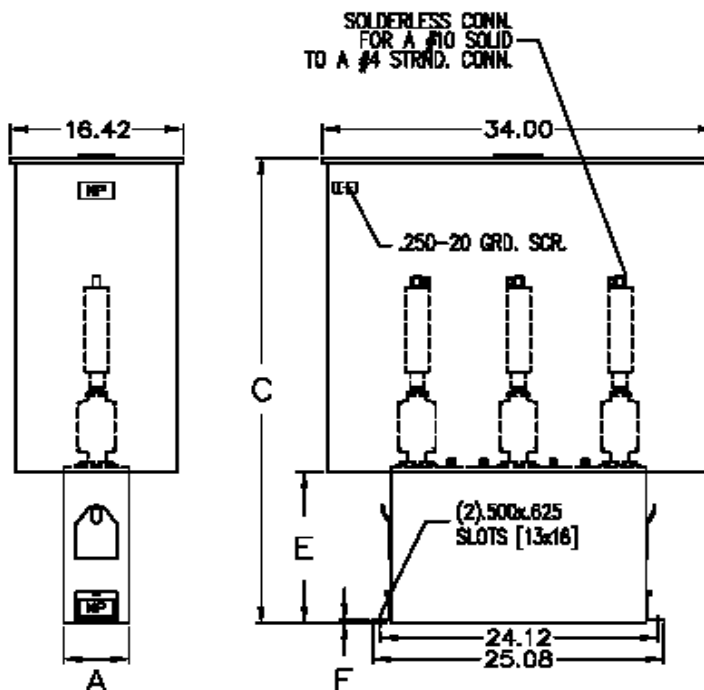
6600-13,800 Volt Equipment

3-Phase, Individual Units with Terminal Box and Fuses

KVAR	CATALOG 6600V 50Hz 3PH	CATALOG 6600V 60Hz 3PH	A (in.)	C (in.)	E (in.)	F (in.)	Wt. (lbs.)
50	36F2963110	36F2963130	4.25	45.50	14.46	0.25	198
100	36F2963111	36F2963131	4.25	45.50	14.46	0.25	198
150	36F2963112	36F2963132	4.25	45.50	14.46	0.25	198
200	36F2963113	36F2963133	5.62	45.50	14.46	0.25	220
250	36F2963114	36F2963134	5.62	48.50	17.46	0.25	246
300	36F2963115	36F2963135	5.62	53.50	22.46	0.25	281
350	36F2963116	36F2963136	5.62	53.50	22.46	0.25	281
400	36F2963117	36F2963137	6.25	57.25	26.21	0.25	336

KVAR	CATALOG 7200V 50Hz 3PH	CATALOG 7200V 60Hz 3PH	A (in.)	C (in.)	E (in.)	F (in.)	Wt. (lbs.)
50	36F2963150	36F2963170	4.25	45.50	14.46	0.25	198
100	36F2963151	36F2963171	4.25	45.50	14.46	0.25	198
150	36F2963152	36F2963172	4.25	45.50	14.46	0.25	198
200	36F2963153	36F2963173	5.62	45.50	14.46	0.25	220
250	36F2963154	36F2963174	5.62	48.50	17.46	0.25	246
300	36F2963155	36F2963175	5.62	53.50	22.46	0.25	281
350	36F2963156	36F2963176	5.62	53.50	22.46	0.25	281
400	36F2963157	36F2963177	6.25	57.25	26.21	0.25	336

KVAR	CATALOG 12470V 60Hz 3PH	CATALOG 13800V 60Hz 3PH	A (in.)	C (in.)	E (in.)	F (in.)	Wt. (lbs.)
50	36F2963200	36F2963220	4.25	45.50	14.46	0.25	198
100	36F2963201	36F2963221	4.25	45.50	14.46	0.25	198
150	36F2963202	36F2963222	4.25	45.50	14.46	0.25	198
200	36F2963203	36F2963223	4.25	45.50	14.46	0.25	220
250	36F2963204	36F2963224	5.62	48.50	17.46	0.25	246
300	36F2963205	36F2963225	5.62	48.50	17.46	0.25	246
350	36F2963206	36F2963226	5.62	48.50	17.46	0.25	246
400	36F2963207	36F2963227	5.62	53.50	22.46	0.25	281
450	36F2963208	36F2963228	5.62	53.50	22.46	0.25	281
500	36F2963209	36F2963229	6.25	57.25	26.21	0.25	336





Capacitor Cell Dimensions 2400-7200 Volt, 3 Phase

	KVAR	CATALOG NUMBER	A	B	C	D	Wt.	
			(in.)	(in.)	(in.)	(in.)	(lbs.)	
2400 VOLTS	25	52L301WS60	4	7.50	12.7	7.50	23	
	50	51L301WS60	4	7.50	12.7	7.50	23	
	75	51L304WS60	4	7.50	12.7	7.50	23	
	100	54L303WS60	4	9.25	14.45	9.25	28	
	125	54L306WS60	4.38	10.00	15.2	9.25	35	
	150	54L308WS60	4	12.50	17.7	9.25	40	
	175	54L317WS60	4.38	13.18	18.38	9.25	45	
	200	58L302WS60	4.88	13.18	18.38	9.25	51	
	225	16L0153WS3	5.12	15.88	21.08	15.00	61	
	250	16L0154WS3	5.12	15.88	21.08	15.00	61	
4160 VOLTS	25	52L302WS60	4	7.50	12.7	7.50	23	
	50	51L302WS60	4	7.50	12.7	7.50	23	
	75	51L305WS60	4	7.50	12.7	7.50	23	
	100	54L304WS60	4	9.25	14.45	9.25	28	
	125	54L307WS60	4.5	10.00	15.2	9.25	35	
	150	54L309WS60	4.25	12.50	17.7	9.25	40	
	175	54L313WS60	4.5	13.18	18.38	9.25	45	
	200	58L303WS60	5.12	13.18	18.38	9.25	51	
	225	16L0156WS3	5.12	15.88	21.08	15.00	61	
	250	16L0157WS3	5.12	15.88	21.08	15.00	61	
4800 VOLTS	25	52L303WS60	4	7.50	12.7	7.50	23	
	50	51L303WS60	4	7.50	12.7	7.50	23	
	75	51L306WS60	4	7.50	12.7	7.50	23	
	100	54L305WS60	4	9.25	14.45	9.25	30	
	125	54L310WS60	4.5	10.00	15.2	9.25	35	
	150	54L403WS60	4	12.50	17.7	9.25	40	
	175	54L311WS60	4.38	13.18	18.38	9.25	45	
	200	58L424WS60	4.88	13.18	18.38	9.25	51	
	225	16L0160WS3	5.12	15.88	21.08	15.00	61	
	250	16L0161WS3	5.12	15.88	21.08	15.00	61	
6600 VOLT 50Hz 3PH	275	16L0162WS3	5.12	18.88	24.08	15.00	73	
	300	16L0163WS3	5.12	18.88	24.08	15.00	73	
	50	16L0114WH3	4.25	14.75	24.35	14.50	80	
	100	16L0111WH3	4.25	14.75	24.35	14.50	80	
	150	16L0264WH3	4.25	14.75	24.35	14.50	80	
	200	16L0113WH3	5.62	14.75	24.35	14.50	102	
	250	16L0265WH3	5.62	17.75	27.35	17.50	128	
	300	16L0266WH3	5.62	22.75	32.35	22.50	163	
	350	16L0267WH3	5.62	22.75	32.35	22.50	163	
	400	16L0268WH3	6.25	26.50	36.10	26.25	218	
6600 VOLT 60Hz 3PH	50	16L0220WH3	4.25	14.75	24.35	14.50	80	
	100	16L0222WH3	4.25	14.75	24.35	14.50	80	
	150	16L0186WH3	4.25	14.75	24.35	14.50	80	
	200	16L0269WH3	5.62	14.75	24.35	14.50	102	
	250	16L0270WH3	5.62	17.75	27.35	17.50	128	
	300	16L0271WH3	5.62	22.75	32.35	22.50	163	
	350	16L0272WH3	5.62	22.75	32.35	22.50	163	
	400	16L0196WH3	6.25	26.50	36.10	26.25	218	
	7200 VOLT 50Hz 3PH	50	16L0275WH3	4.25	14.75	24.35	14.50	80
		100	16L0276WH4	4.25	14.75	24.35	14.50	80
150		16L0277WH4	4.25	14.75	24.35	14.50	80	
200		16L0278WH4	5.62	14.75	24.35	14.50	102	
250		16L0279WH4	5.62	17.75	27.35	17.50	128	
300		16L0280WH4	5.62	22.75	32.35	22.50	163	
350		16L0281WH4	5.62	22.75	32.35	22.50	163	
400		16L0282WH4	6.25	26.50	36.10	26.25	218	
7200 VOLT 60Hz 3PH	50	16L0283WH4	4.25	14.75	24.35	14.50	80	
	100	16L0284WH4	4.25	14.75	24.35	14.50	80	
	150	16L0285WH4	4.25	14.75	24.35	14.50	80	
	200	16L0286WH4	5.62	14.75	24.35	14.50	102	
	250	16L0287WH4	5.62	17.75	27.35	17.50	128	
	300	16L0288WH4	5.62	22.75	32.35	22.50	163	
	350	16L0289WH4	5.62	22.75	32.35	22.50	163	
	400	16L0290WH4	6.25	26.50	36.10	26.25	218	



12470 and 13800 Volt 3-Phase Capacitors

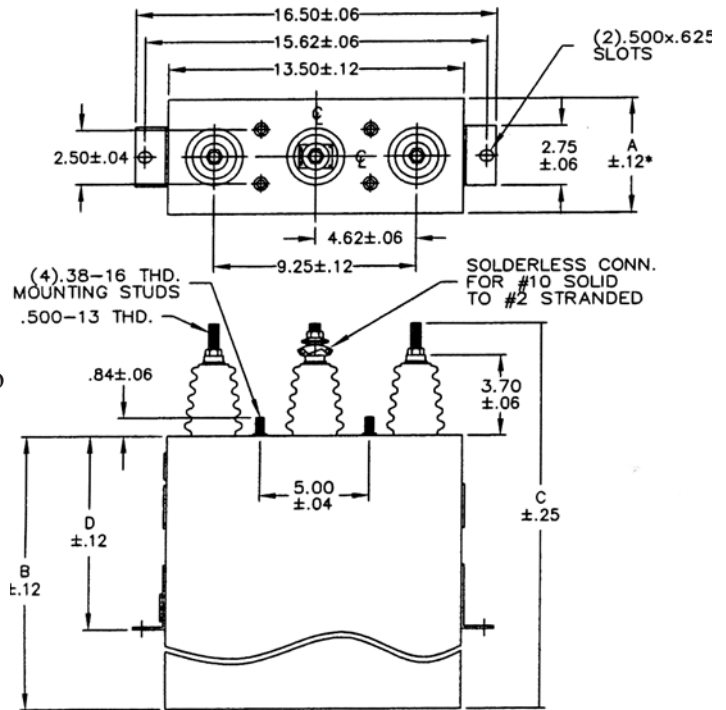
	KVAR	CATALOG	A	B	C	D	Wt.
			(in.)	(in.)	(in.)	(in.)	(lbs.)
12470 VOLT 60Hz 3PH	50	16L0300WH3	4.25	14.75	24.35	14.50	80
	100	16L0301WH3	4.25	14.75	24.35	14.50	80
	150	16L0302WH3	4.25	14.75	24.35	14.50	80
	200	16L0303WH3	4.25	14.75	24.35	14.50	80
	250	16L0304WH3	5.62	17.75	27.35	17.50	128
	300	16L0305WH3	5.62	17.75	27.35	17.50	128
	350	16L0306WH3	5.62	17.75	27.35	17.50	128
	400	16L0307WH3	5.62	22.75	32.35	22.50	163
	450	16L0308WH3	5.62	22.75	32.35	22.50	163
	500	16L0309WH3	6.25	26.50	36.10	26.25	218
13800 VOLT 60Hz 3PH	50	16L0310WH3	4.25	14.75	24.35	14.50	80
	100	16L0311WH3	4.25	14.75	24.35	14.50	80
	150	16L0312WH3	4.25	14.75	24.35	14.50	80
	200	16L0313WH3	4.25	14.75	24.35	14.50	80
	250	16L0314WH3	5.62	17.75	27.35	17.50	128
	300	16L0315WH3	5.62	17.75	27.35	17.50	128
	350	16L0316WH3	5.62	17.75	27.35	17.50	128
	400	16L0317WH3	5.62	22.75	32.35	22.50	163
	450	16L0318WH3	5.62	22.75	32.35	22.50	163
	500	16L0319WH3	6.25	26.50	36.10	26.25	218

Applicable standards:

- NEMA standards publication CP 1-1988 (Shunt Capacitor) or latest revision.
- IEEE Standard for Shunt Power Capacitors, Std 18-1992, or latest revision.
- IEC Publication 871-1 (1987) or latest revision.

Capacitor Construction

- Capacitor case material is type ANSI 409 stainless steel suitable for outdoor service.
- Capacitor bushings utilize a gasket sealing assembly to provide a mechanical and electrical seal to the capacitor cover. The bushing terminals are 0.500-13 thread tin plated copper.
- The capacitor case is ANSI #70 grey. The paint system is a durable Epoxy/Urethane composition which meets the requirements of ANSI C57.12.31 (Pole Mounted Transformer Enclosure Coating Integrity). A portion of the bottom of the mounting bracket will be left unpainted to allow proper grounding of unit to the capacitor bank.



* UP TO +.50 CASE BULGE

Internal Construction

- Capacitor units are of the "all film" design using multiple sheets of Hazy™ Polypropylene Film as the solid dielectric material.
- Each capacitor is provided with an internal discharge resistor assembly to reduce the residual voltage to 50 volts or less within 5 minutes after the capacitor is disconnected from rated voltage.
- The insulating liquid is a Non-PCB Synthetic Aromatic Hydrocarbon suitable for use in outdoor shunt capacitors and complies with all the current environmental standards.

GE offers other power quality products. For additional information on line & load reactors, high voltage capacitor equipment and harmonic solutions, contact your GE Industrial Systems office or the address below.



GE Capacitor

*GE Capacitor and Arrester
381 Broadway, Ft. Edward, NY 12828
www.geindustrial.com, choose Products > Capacitor
©2003 General Electric Company*